



CIRCULAR. 2020-30

Subject: New Designation of Emission Control Areas (ECA) and Speed Limits in South Korean Ports

Date: 16.08.2020

Page 1 of 2

All ICS Customers/ Surveyors

Respectfully

The South Korean Ministry of Maritime Affairs and Fisheries (“MOF”) has announced an air quality control programme that defines selected South Korean ports and areas as Emission Control Areas (ECA) with propose to reduce particulate emissions from ships. The effectiveness of programme will be supported by maximum Sulphur limits and speed limit which could find out more in this Circular.

A) The following ports/areas are covered by the air quality control programme

- Incheon, Pyeongtaek, Dangjin Area
- Yeosu, Gwangyang area (including Hadong port).
Busan
- Busan(west) area
- Ulsan area port area (including Mipo port).

Note 1: The vessel Speed Reduction program sea area are available in the South Korean Ministry of Oceans and Fisheries web site.

Note 2: The details of the limits of the new Emission Control Areas are provided in the attached document.

B) The air quality control initiatives in South Korea consist of two parts as below:

B-1) maximum Sulphur limits (mandatory Requirement)

- 1) From 1 September 2020 the ships required to use fuel with max. 0.1% Sulphur content or an approved equivalent arrangement while berthing and anchoring for the times set out below:
 - a. Berthing ships: 1 hour after completion of berthing until 1 hour before un-berthing time.
 - b. Anchoring ships: 1 hour after completion of anchoring until 1 hour before heaving up time.
- 2) From 1 January 2022: It will be mandatory for ships to use fuel with max. 0.1% Sulphur content or an approved equivalent arrangement while navigating or berthing inside ECAs.

B-2) Speed limits (recommended, port fees will be reduced)

Ships with 3000GT and over should navigate no faster than a maximum speed of 12 knots for container ships and car-carriers, 10 knots for other ship types, when moving from starting point to an end point within a Sea Area. The maximum speed is different at each port area which obtained in below table. Each Sea Area will span 20 nautical miles in radius, measured from a specific lighthouse in each port.

For participating ships, port entry/leave fee (111 KRW per ton), which is the biggest part of port-facilities usage fee, will be discounted. (The discount ceiling differs by each port)

CIRCULAR. 2020-30

Subject: New Designation of Emission Control Areas (ECA) and Speed Limits in South Korean Ports

Date: 16.08.2020

Page 2 of 2

Container ships, which enters port fast and can have huge effect on reducing fine dust, will enjoy up to 30% discount, while other ships will enjoy up to 15% discount.

Note below table for Speed reduction in different port area:

Busan Port		Ulsan Port		Yeosu, Gwangyang Port		Incheon Port	
Ship Type	Recommended Speed (knot)	Ship Type	Recommended Speed (knot)	Ship Type	Recommended Speed (knot)	Ship Type	Recommended Speed (knot)
Container	12	Container	12	Container	12	Container	12
General Cargo	10	Crude Oil	10	General Cargo	10	General Cargo	10
Car Carrier	12	Chemical	10	LNG carrier	10	LNG carrier	10

C) Note to Ships Owners/Managers

- 1) Ship-owners and managers should be noted the regulation on maximum Sulphur limit will be mandatory and regulation on speed limit sets as recommendation, so port fees will be reduced for ships which lower their speeds to set targets defined in the program.
- 2) When calling South Korean ports recommended to Ship-owners, Managers to contact with the agents or port authorities for port requirements before arrival.

The electronic file of this document could be found at the following address:

<http://ics.org.ir/Pages/fa/Statutory.aspx#part>

Also this Electronic File will be sent via email to all respectful ICS Customers and Surveyors.

Ehsan Hassani
Manager of Convention & Legislation Department
Iranian Classification Society



Disclaimer: Although all possible efforts have been made to ensure correctness and completeness of the information and guides contained in this technical information, the Iranian classification society is not responsible for any errors ,damages ,penalties or emissions made herein, nor held for any actions taken by any party as a result of information retrieved from this technical information.

This circular will be available on ICS E-fleet software with reference number 32/99/0025.

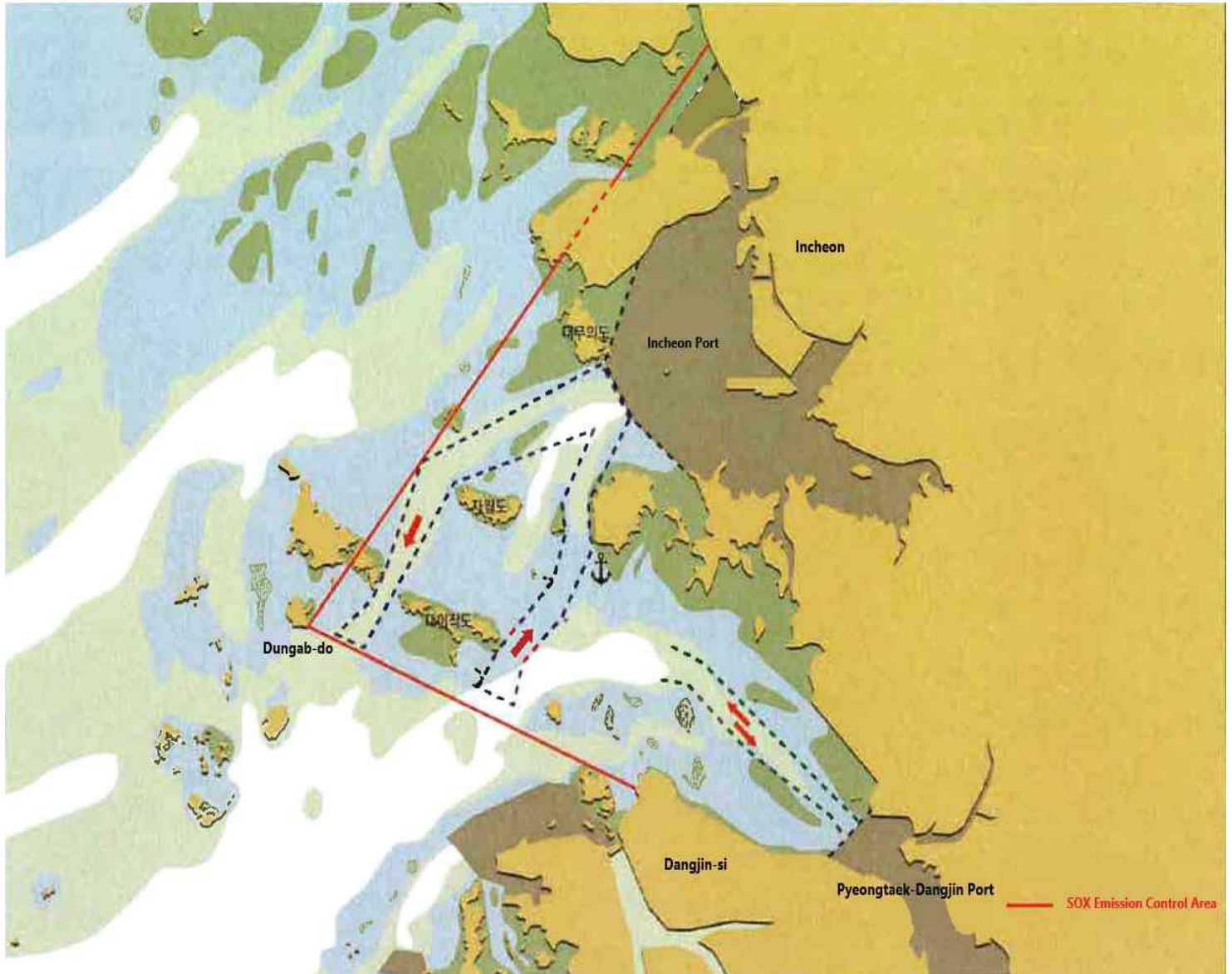


NO.5, Shabnam Alley, Ghaem Magham Farahani St., 7th Tir Sqr., Tehran, IRAN
P. Code: 1589675951 Tell: (021) 42186000 Fax: (021) 88324734

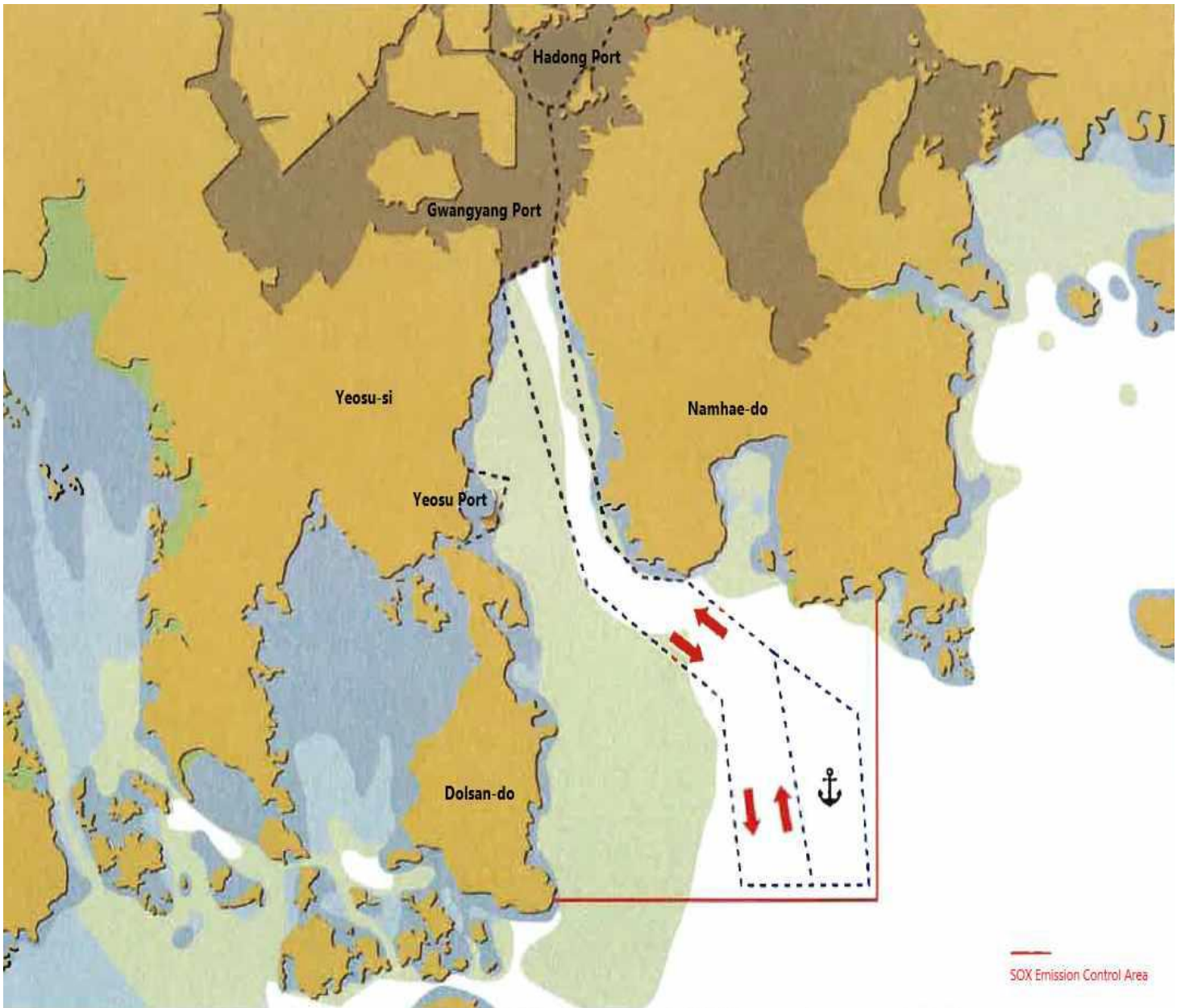
Attachment to ICS Circ.2020-30

Emission Control Area details:

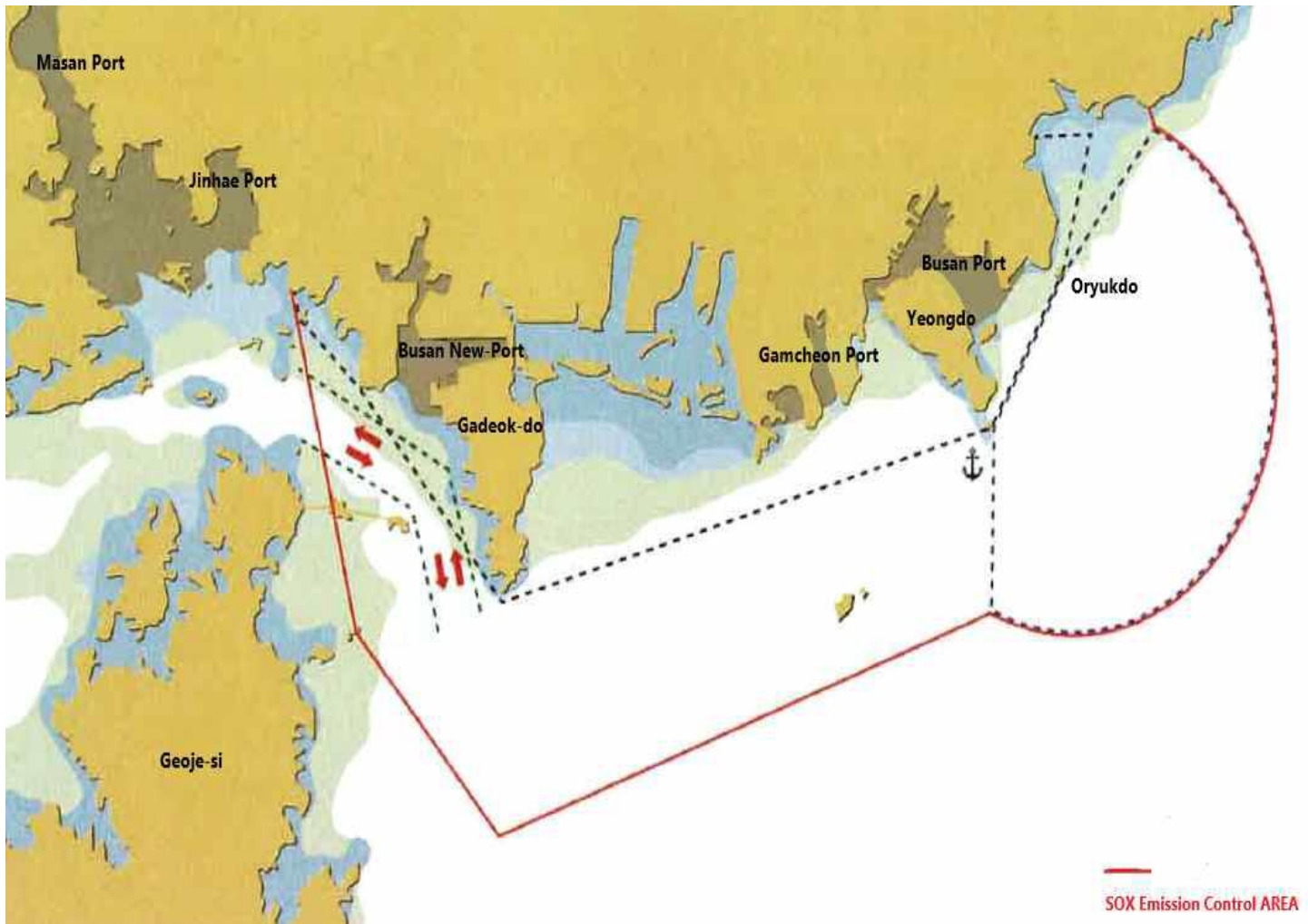
- 1) **(Incheon, Pyeongtaek-Dangjin Area)** 37 degrees 36 minutes 00 seconds north latitude, 126 degrees 33 minutes 42 seconds east longitude (near Daebeok-ri, Gimpo-si), 37 degrees 10 minutes 00 seconds north latitude, 126 degrees 06 minutes 30 seconds (south-end of Mungap island in Incheon), 37 degrees 02 minutes 54 seconds north latitude, Sea level inside the line that connects 126 degrees 29 minutes 00 seconds (near Seokmungak, Dangjin-si)



- 2) **(Yeosu and Gwangyang Ports)** 34 degrees 35 minutes 24 seconds north latitude, 127 degrees 48 minutes 20 seconds east longitude (Southeast end of Dolsan-do, Yeosu) 34 degrees 35 minutes 24 seconds north latitude, 128 degrees 00 minutes 26 seconds north latitude 34 degrees 42 minutes 42 Cho, line connecting the branch at 128 degrees 00 minutes 26 seconds (Namhae-gun Imman) and 34 degrees 56 minutes 22 seconds north, 127 degrees 52 minutes 06 seconds east and 34 degrees 56 minutes 46 seconds north, and 127 degrees 51 minutes 56 seconds east Sea level inside the line connecting points (Noryang Bridge)



- 3) **(Busan sea area)** 35 degrees 09 minutes 36 seconds north latitude, 129 degrees 11 minutes 32 seconds east longitude (Southeast end of Cheongsapo, Middle East, Busan), 35 degrees 09 minutes 04 seconds north latitude, 129 degrees 11 minutes 44 seconds east long, Appendix 1 of Enforcement Decree of the Maritime Safety Act The outer arc of the special area of traffic safety in Busan area, 34 degrees 58 minutes 46 seconds north, 129 degrees 04 minutes 14 seconds east, 34 degrees 55 minutes 00 seconds north, 128 degrees 50 minutes 00 seconds east, 34 degrees 58 minutes north latitude 41.5 Second, east of 128 degrees 49 minutes 19.5 seconds (east side of the entrance of the port of Gadeok-sudo), north latitude 35 degrees 02 minutes 01.4 second, east of 128 degrees 47 minutes 37.8 seconds (buoy of the 12th port of Gadeoksudo arrival port), 35 degrees 03 minutes north of 19.5 Sea level inside the line that connects the points at 128 degrees 43 minutes 23.5 seconds (East Route No. 20 Buoy, Gadeok-Su Island), 35 degrees 05 minutes 42 seconds north, and 128 degrees 42 minutes 53 seconds east (western end of Deok-dong, Changwon-si)
- 4) **(Busan port west side sea area)** 35 degrees 03 minutes 19.5 seconds north latitude, 128 degrees 43 minutes 23.5 seconds east longitude (buoy No. 20 route of entry port of Gadeoksudo island), 34 degrees 58 minutes 30 second north latitude, 128 degrees 45 minutes 21 second longitude (Garsan-do, Geoje-si), 34 degrees 55 minutes 00 seconds north latitude, 128 degrees 50 minutes 00 seconds east longitude, 34 degrees 58 minutes north latitude 41.5 seconds northeast, 128 degrees 49 minutes 19.5 seconds east longitude (east side of the entrance to the port of Gadeoksudo), 35 degrees 02 minutes 01.4 seconds north latitude, Line that connects the points at 128 degrees 47 minutes 37.8 seconds in Tokyo, buoyed at No. 12 entry port of Gadeok-Sudo, 35 degrees 03 minutes and 19.5 seconds north latitude, and buoys at No. 20 buoy at No. 20, 128 degrees 43 minutes and east longitude. Sea surface inside (only for ship using Busan New Port)



- 5) **(Ulsan port area)** Sea area within the arc of 6.0 mile (outside arc of the special traffic safety area in Ulsan area) centered on 35 degrees 24 minutes 37 seconds north latitude and 129 degrees 27 minutes 52 seconds long east and Ulsan port according to Article 3 of the Port Act Sea level (including Mipo Port)

